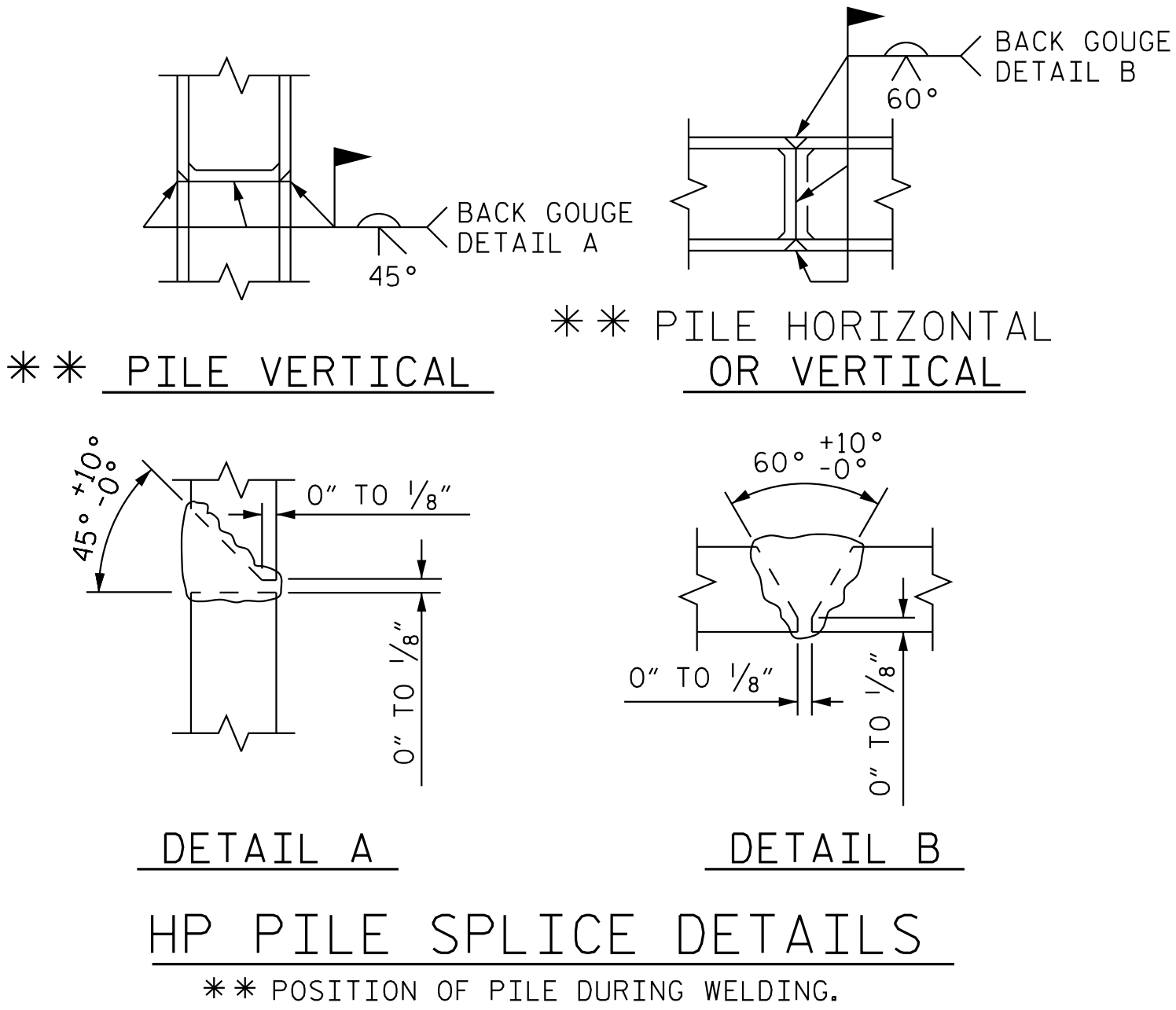


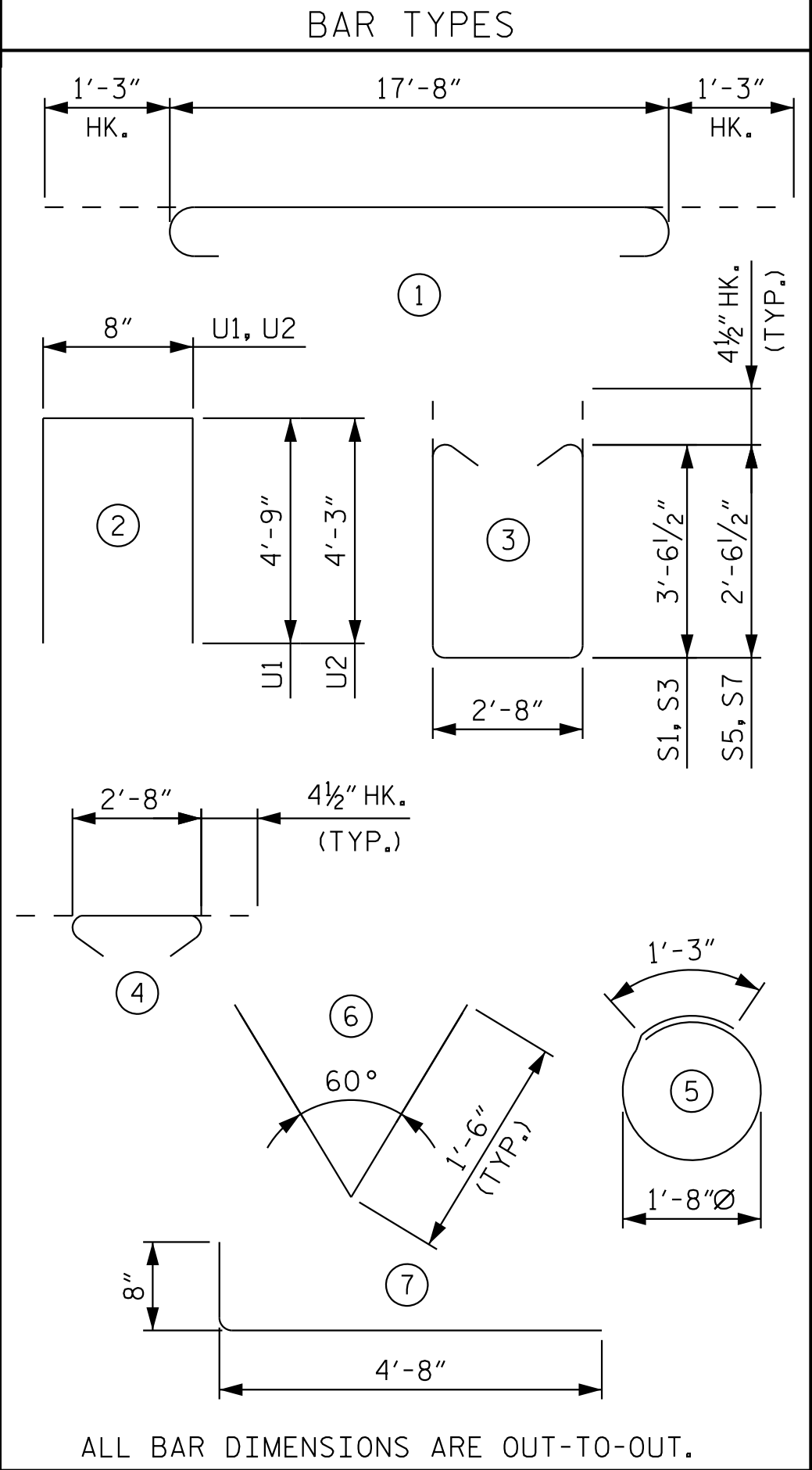
K:\RDT_Structures\Bridge\NC\015574013 - BL-0008 Clear Creek\Coord\013_BLD008_SMU_EB5.dgn

9/30/2025

BILL OF MATERIAL					
FOR ONE END BENT (STRUCTURE #1) (2 REQ'D)					
BAR	NO.	SIZE	TYPE	LENGTH	WEIGHT
B1	4	9	STR	17'-8"	240
B2	4	9	1	20'-2"	274
B3	10	5	STR	17'-8"	184
B4	8	4	STR	17'-8"	94
B5	5	4	STR	2'-8"	9
B6	4	4	STR	17'-8"	47
H1	24	4	STR	6'-8"	107
H2	16	4	7	5'-4"	57
S1	16	4	3	10'-6"	112
S2	16	4	4	3'-5"	37
S3	3	4	3	10'-6"	21
S4	12	4	5	6'-6"	52
U1	19	4	2	10'-2"	129
V1	6	7	6	3'-0"	37
V2	24	4	STR	6'-6"	104
V3	8	4	STR	3'-7"	19
REINFORCING STEEL				LBS.	1,523
STRUCTURE #1					
CLASS A CONCRETE				C. Y.	12.6



BILL OF MATERIAL					
FOR ONE END BENT (STRUCTURE #2) (2 REQ'D)					
BAR	NO.	SIZE	TYPE	LENGTH	WEIGHT
B1	4	9	STR	17'-8"	240
B2	4	9	1	20'-2"	274
B3	6	5	STR	17'-8"	111
B4	8	4	STR	17'-8"	94
B5	5	4	STR	2'-8"	9
B6	4	4	STR	17'-8"	47
H1	20	4	STR	6'-8"	89
H2	16	4	7	5'-4"	57
S4	6	4	5	6'-6"	26
S5	16	4	3	8'-6"	91
S6	16	4	4	3'-5"	37
S7	3	4	3	8'-6"	17
U2	19	4	2	9'-2"	116
V1	6	7	6	3'-0"	37
V4	24	4	STR	5'-6"	88
V5	8	4	STR	2'-7"	14
REINFORCING STEEL				LBS.	1,347
STRUCTURE #2					
CLASS A CONCRETE				C. Y.	10.3



DOCUMENT NOT CONSIDERED FINAL
UNLESS ALL SIGNATURES COMPLETED

REV. No.:	REVISION:	DATE:	DRAWN BY:	CHECKED BY:
This document, together with the concepts and designs presented herein, as an instrument of service, is intended only for the specific purpose and client for which it was prepared. Reuse of and improper reliance on this document without written authorization and adoption by Kimley-Horn and Associates, Inc., shall be without liability to Kimley-Horn and Associates, Inc. Copyright Kimley-Horn and Associates, Inc., 2024				

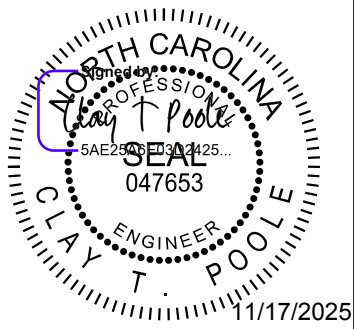
PREPARED IN THE OFFICE OF:

Kimley»Horn

NC LICENSE #F-0102
200 S TRYON ST., SUITE 200
CHARLOTTE, NORTH CAROLINA 28202
PHONE: (919) 677-2000

© 2025

BILL OF MATERIAL



PROJECT:

CLEAR CREEK GREENWAY

JOB NUMBER: 015574013

SHEET NUMBER: S-13